

Fair
MANUFACTURING, INC.

2900 Alumax Rd.
Yankton, SD 57078
(605) 653-3247
sales@fairmfg.com

www.fairmfg.com

7800 Series Bale Processors



A Fair Manufacturing 7800 Bale Processor is a must for any shredding application. Ideal for bedding, feeding & grinding.

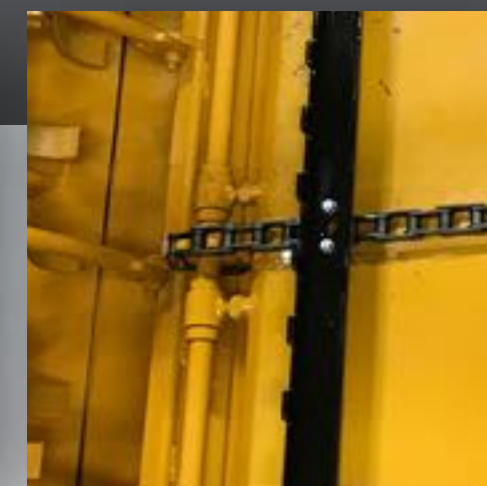
7830 Features



Oil Bath Gearbox:
Rotor is driven by heavy-duty oil bath drive.



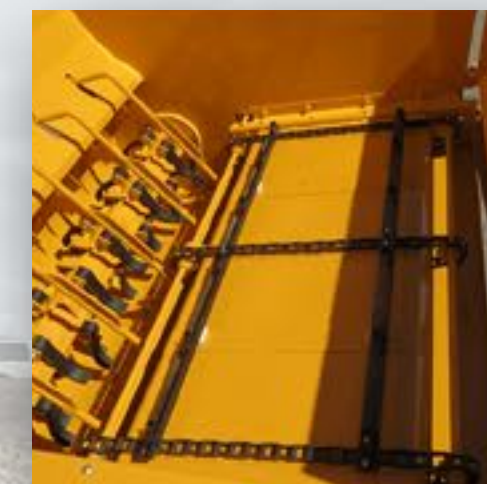
Stationary Knives:
The flails on the rotor pass through removable stationary knives to chop hay for a more palatable consumption and a finer cut.



Heavy Apron Table
Large 1-1/4 inch shafts and double bearings for each sprocket ensure machine longevity.

Easy Twine Removal:
The patented parallel running bars create separation between the twine and rotor allowing the operator adequate space to insert a cutting tool for easy twine removal.

Big Gap Slat Spacing:
Large gap space between the slats pushes the bale rather than carrying the bale, translating to less slippage of the bale over the slats and less wear and tear on components.



Bale Ejection Door:
Patented side door opens sideways allowing for bale ejection if mold or unwanted material is discovered mid-process.

Adjustable Discharge:
Enables operator to quickly adjust discharge when bedding and feeding. The discharge opening can be quickly and easily adjusted.

Heavy Duty Bale Lift:
Two stage bale lift pulls the bale up and away so the next bale is undisturbed. Large platform contains loose hay for cleaner operations.



In Cab Controls:
Only one tractor remote is required making hooking up quick and easy. All electric controls can be mechanically overridden.



Hydraulic Slug Bars:
The hydraulic slug bars allow the operator to decrease knife exposure as the bale gets processed down to a smaller core for complete control of discharge volume.



16.5L-16.1 Flotation Tires

Specifications

Fair
MANUFACTURING, INC.

Model:	7810	7830	2900 Alumax Rd. Yankton, SD 57078 (605) 653-3247 www.fairmfg.com
Dimensions			
Length:	15'6"	15'6"	
Height:	8'10"	8'10"	
Width (Operation):	9'1"	9'1"	
Overall Weight:	4300 lbs	4300 lbs	
Drawbar Weight:	1300 lbs	1300 lbs	
Tractor Requirements			
Horsepower:	85 HP	85 HP	
PTO:	1000	1000	
Hydraulic Remotes:	3 Double-Acting	1 Double-Acting	
Hydraulic Pressure:	2000 psi	2000 psi	
Hydraulic Flow Rate:	8 gpm	8 gpm	
General			
Bale Size Capacity:	6'x 6' - Two Bales	6'x 6' - Two Bales	
Bale Weight Capacity:	2200 lbs	2200 lbs	
Flail Description:	5/8"x2" - Heat-Treated Spring Steel	5/8"x2" - Heat-Treated Spring Steel	
Flail Quantity:	30	30	
Flail Drum Length:	78"	78"	
Slug Bar Quantity:	5	5	
Slug Bar Adjustment:	Manual-Adjustable	Hydraulic-Infinite Adjustment	
Tire Size (Standard):	16.5L-16.1 Flotation Tires	16.5L-16.1 Flotation Tires	
Jack:	5000 lbs	5000 lbs	
Controls			
Controls:	N/A	Full Feature In-Cab Control Box	
Apron Chain:	Hydraulic with Flow Control	Electric over Hydraulic with Flow Control	
Slug Bar:	Manual-Adjustable	Electric over Hydraulic	
Discharge Door:	Hydraulic	Electric over Hydraulic	
Bale Lift:	Hydraulic	Electric over Hydraulic	

Product Options:



Grain Tank

- Tank capacity 24 bushels, designed for gravity flow to auger
- Metering, adjustable flow control both from the hydraulic motor and slide gate on the tube
- Steel lid can be easily opened and closed from the ground level using the attached door lever
- Grain trough follows discharge door at all angles for windrow or bunk feeding

Square Bale Kit